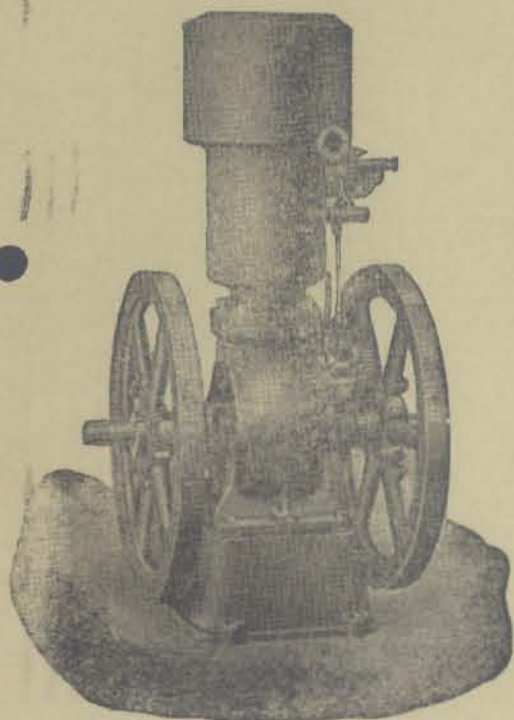


EARLY DAY GAS ENGINE & TRACTOR ASSN.
BRANCH 9
**THE
IGNITOR**

Vol. 1

No. 1



Fuller-Johnson hopper cooled vertical
Madison, Wisconsin 1905-1910

President

BILL MAY
1591 Greenfield Dr.
El Cajon, Calif. 92021

Vice-President

MIKE ASHBECK
18391 Santiago Blvd.
Villa Park, Calif. 92667

Secretary-Treasurer

WILLIAM GIBSON
8572 Atlas View
Santee, Calif. 92071

Directors

DON BEACH
2734 Chaffee St.
National City, Calif. 92050

CARL BERGMAN
723 West Avenue I 62B
Lancaster, Calif. 93534

JIM BOVE
6331 West 80th St.
Los Angeles, Calif. 90045

JIM BRUCE
P.O. Box 263
Descanso, Calif. 92016

L. W. GRADY
P.O. Box 281
Claremont, Calif. 91711

Editor

RAY & MARY VOSE
2167 Burgener Blvd.
San Diego, Calif. 92110

Classified Ads

ALLEN CARROLL
6632 Eldridge
San Diego, Calif. 92120

*National Director
Magazine Subscriptions*

JOHN MOLAMPHY
310 East 60th St.
Long Beach, Calif. 90805

SPRING SHOW

SANTEE LAKES - JUNE 19 & 20

Like the old story goes seems like each meeting gets bigger and better. We will have twice the amount of space that we've had in the past and from what I keep hearing we will need it.

We will have a demonstration of carding and spinning wool by Mrs. Paxton and Leo Coss will make horse shoes and other trinkets in his blacksmith shop like they did in days gone by. We hope to cook beans and corn bread on an old cook stove (tenn-agers under the *Stroud's* guidance). We will have raw milk and use a cream separator to separate the cream which will be used in a "daisy churn" to make butter. I bet the butter will go good on that corn bread with a plate of beans. Jim Sullivan with his large Minneapolis steam engine, Rube Nelson with his Russel steam engine and Merle Shipley with his 1/4 scale steam engine will be there. At least 8—10 gas tractors, Cletracs with the engines will be sawing wood, shelling corn, grinding corn and pumping water like days of old.

BRANCH 6 SPRING SHOW 5-23-71

Noeller Brothers Ranch at 6400 Leedom Road, Hughson has invited all members and interested persons for a Gas-Up on Sunday, May 23, 1971. In fact there will be lots of activity on Saturday, May 22, 1971 and there are motels in Turlock and Modesto. Anyone wanting a map may get in touch with Alton Rexin 2461 Geer Road, Hughson, California 95326.

MEMBERSHIP & EQUIPMENT ROSTER

Last call for those members who want to be listed in the next Roster & Equipment listing. We have only about one third of our members reporting. We do not want to overlook anyone in the listing, however if we don't hear from you we have to assume that you have no equipment. If you don't know the year the equipment was built or what make — list it anyhow. This listing goes to National Headquarters and we would like as complete a listing as possible. We must go to press by June. So get the list in to us.

Our insurance for the spring show will be provided by the Santee Lakes Festival. Form safety's sake however all stationary displays will be in a roped-off area as was done at the Antelope Valley Fair. Only the mobile units will be allowed outside the ropes. Now fellows, even though roped off, watch the youngsters to see that they do not get too close to moving equipment. We've had no one hurt so let's keep the record good. Again, do not run this equipment too fast or it will come apart. If someone notices a dangerous piece of equipment, notify Bill May or one of the other directors.

Branch 9 will have a refreshment booth with hot dogs, hamburgers, etc. Save yourself the trouble of bringing food and help the club treasury at the same time.

See other items in Newsletter for engine drawing, motel reservations, etc. See you all there.

"OUR APOLOGIES"

Those of you who did not get "The Ignitor" in February of 1971 please get in touch with one of your directors. We sent the letters by 3rd class mail (which means it has a low priority and

Continued on Page Two

SANTEE LAKES ENGINE DRAWING

A 1½ H.P. Fairbanks Morse Engine in running order has been donated to the club by L. W. Grady of Clairemont. The purpose is to supplement the treasury for the many things the club would like to do. The \$1.50 dues does not do any more than pay the postage (let alone supplies) for the newsletter, particularly when you realize that \$.50 of the dues goes to National Headquarters. The roster and equipment listing takes a lot of supplies when you realize that we will probably print 250 of these. A donation of \$1.00 per ticket (winner need not be present) for the drawing at 1:00 P.M. on Sunday, June 20, 1971 will be a token of appreciation to support the club. *Thanks!!!*

NEWSLETTER

How many of you enjoy getting the Newsletter four times a year? So far we have had no trouble getting material to put in it but keep the material coming and if it doesn't catch one issue, it will the next. We want to keep the number of pages down so that it may be mailed first class without running the postage up. Along with this we'd like to see more of you use the want ad section. Frankly we're hoping the want ads will eventually pay for a good part of printing and mailing the newsletter. I'm sure there are more of you fellows that are looking for a part of some equipment or have some parts for trade.

"Our Apologies"

if address has changed it is not forwarded) and several people did not get them. Inside was the form to be filled out for the equipment and roster that we are compiling for the club. Please get the form from one of your board members and get it filled out immediately and get it in. *Thanks.*

SPEEDY RECOVERY

One of our members, F. L. Williams, who is one of the original founders (back in 1957) of the Early Day Gas Engine Tractor Assn. was burned by steam. Mr. Williams, along with several other fellows and with the help of the Smiths, (who published *Engineers & Engines* for many years), spent many hours and days organizing our club. Hope you are getting along fine by now F. L.

Early Day Gas Engine & Tractor Association Audit Report

We have completed the audit and examined the books of Early Day Gas Engine and Tractor Assn.-Branch 9.

Everything is in order and balances in all accounts are accurate. The books could be kept more of a general nature and leave most of the detail out.

We do recommend that the checking account be set up under a separate account rather than in the personal account of the Secretary-Treasurer.

The club-owned property should be listed in the books, also.

Respectfully yours,
Al Carroll
Charles La Dow

SPRING SOCIALS

There was a very good turnout for the Spring Socials at the Horseless Carriage Club in Encanto and the Ashbeck home in Villa Park. About 40 members, wives and friends enjoyed the movies and hospitality at the Horseless Carriage Club. Even had some door prizes donated by Jack Arbuckle at the Encanto social. About 50 members, wives and friends enjoyed the same thing plus they got to see the 40-horse side shaft engine of Mike's being run by Eric Rosenau and friends.

Both events were topped off by all the coffee, cakes and soft drinks one could hold. Thanks to all.

TROPICO GOLD MINE MARCH 6, 7, 1971

Twenty-six running engines were the center of attraction at the "gas up" at the 1971 World's Championship Tropico Gold Panning event which took place March 6th and 7th. Members showing their engines were Scott Rawlings with 2 engines, Larry McKibban (1), Willard Richie (1), John Ferrero (1), Carl Bergman (3), Clifford Helwig (3), J. E. MacGibbon (2), J. S. MacGibbon (1), L. W. Grady (3), Tom Howell (1), and the old stand-by Walter Geiser came well-prepared with eight engines and his miniature threshing equipment.

Prizes were donated by the museum and mine. Larry McKibban received a man-sized railroad oil can for the best restored engine. A smaller oiler was awarded to John Ferrero for having the best running engine and a handy wrench went to L. W. Grady for traveling the longest distance. A Moline Plow wrench was given to Walter Geiser for having the largest display—now Walt will need to get a Moline Plow. A small old-time repair wrench was awarded to MacGibbon Jr. for the most trouble—he cranked all day.

"WHAT OUR MEMBERS SAY"

March 5, 1971
Boron, Calif.

Jim Bruce
Descanso, Calif.

Dear Sir,

I was very glad to get the equipment listing sheet I received from you. I joined the club last fall at the Antelope Valley Fair at Lancaster, Calif. I heard a *hit* and *miss* governed engine and following the sound I had the pleasure of seeing the excellent display of engines. Needless to say I came down with the fever at once. I had in mind a very old two cylinder Cushman generating plant, flat belt driven and 110 D.C. that I knew of in South Dakota, my home state. My vacation was in November and while there a snow storm prevented me from getting out in the unpaved country roads. I had the good fortune to find the marine engine of which I am enclosing pictures and a description of the cam and rocker arm system. It is a very unusual design and I have spent my life with large power plant engines and have never seen a system quite like this one. Of all things it is a hemihead as the valve angles show.

I met an elderly man and of all things he had worked at Griffith Machine Works of Los Angeles when he was a teenager and was familiar with these engines. They were made from 1905 to 1910 only and were put on the market in one, two and four cylinder units. I have a lead on a 4 cylinder unit in a boat yard at Long Beach which I hope to get. Last week I acquired a light plant I have on the list and will restore it. The original owner last used it in 1929 when the high line came through here. I am familiar with the Delco Lite, Lalley Lite and Westinghouse units but not this one. It is a 2 cycle engine such as the Lalley Lite. I have certainly enjoyed belonging to the club. I have met some of the members and they are nice fellows. Keep up the good work.

Very truly yours,
Gene Smith

YUCAIPA CALIFORNIA JULY 3, 1971

On 3 July 1971 Frank Burris will have a backyard steamup of Luclabelle, the Covered Seattle steam roller. This engine appeared on the cover of Jan-Feb IMA; however, since that time a cab, cowcatcher, and Mars type headlight have been added in a fashion to resemble an old time English railway locomotive. This engine brings back storybook lore, and beats anything ever to come out of Disneyland. Members and friends are invited to visit this steamup. Frank's address is. 35640 Avenue F Yucaipa, California 92399

MOTEL RESERVATIONS SANTEE LAKES JUNE 19, 20, 1971

BEST WESTERN Motel Mollinesian

El Cajon, California

650 N. Mollison

El Cajon, CaliforniaPhone 442-0601

1 Person\$ 9.45

2 Persons\$11.55

Swimming Pool

FABULOUS 5-7 MOTEL

1531 E Main

El Cajon, CaliforniaPhone 442-0457

1 Person\$7.34

2 Persons\$9.45

Swimming Pool

Please make reservation one week ahead of the Santee Lakes Meet.

FOR SALE

Williams Steam Atomizing Oil Burner Nozzles—3 Gallons per hr. capacity, \$14.50 postage paid. 5 Gallons per hr. capacity, \$16.50 postage paid. Californians please add sales tax. F. L. Williams, 6694 Norcliff Dr., Sebastopol, California 95472.

WANTED

Two good exhaust valves for Model M 20/35 Oilpull. Also, governor drive pulley to fit 3 inch steam engine crankshaft. Also need split steel pulley for steamer 3 inch bore 8 inch face, not over 26 inch diameter. Have 32 inch cast flywheel for trade. Also need small boiler. Frank J. Burris 35640 Avenue F, Yucaipa, Calif. 92399, telephone (714)-797-1704.

LEADS

Several engines for sale from 12 H.P. to 1½ H.P. at prices from \$100 to \$10. Associated equipment includes pumps and a saw. Some equipment restored. Contact C. Baine Isaccson, 5102 San Julian Road, Lompoc, Calif. 93436.

SERVICES OFFERED

Jack Arbuckle, outside sales representative for Ace Auto Supply. Store locations: San Diego, Mission Gorge, Lemon Grove and Imperial Beach. Contact Jack at 469-7247 for information and parts for Antique, classic and modern cars. Champion spark plugs available for early gas engines, tractors and cars.

Prism Film Production, Bill Arbuckle; 461-6412. TV Ads on film. Special films for TV. Stills, 16 MM or Super 8, with or without sound in color and black and white.